



N&C
Outdoor Living
collection



ONLY
£46.65m²
 ex VAT £38.88

Burford

Burford Porcelain Paving brings together the beauty of stone to the outdoors for an alfresco style living.

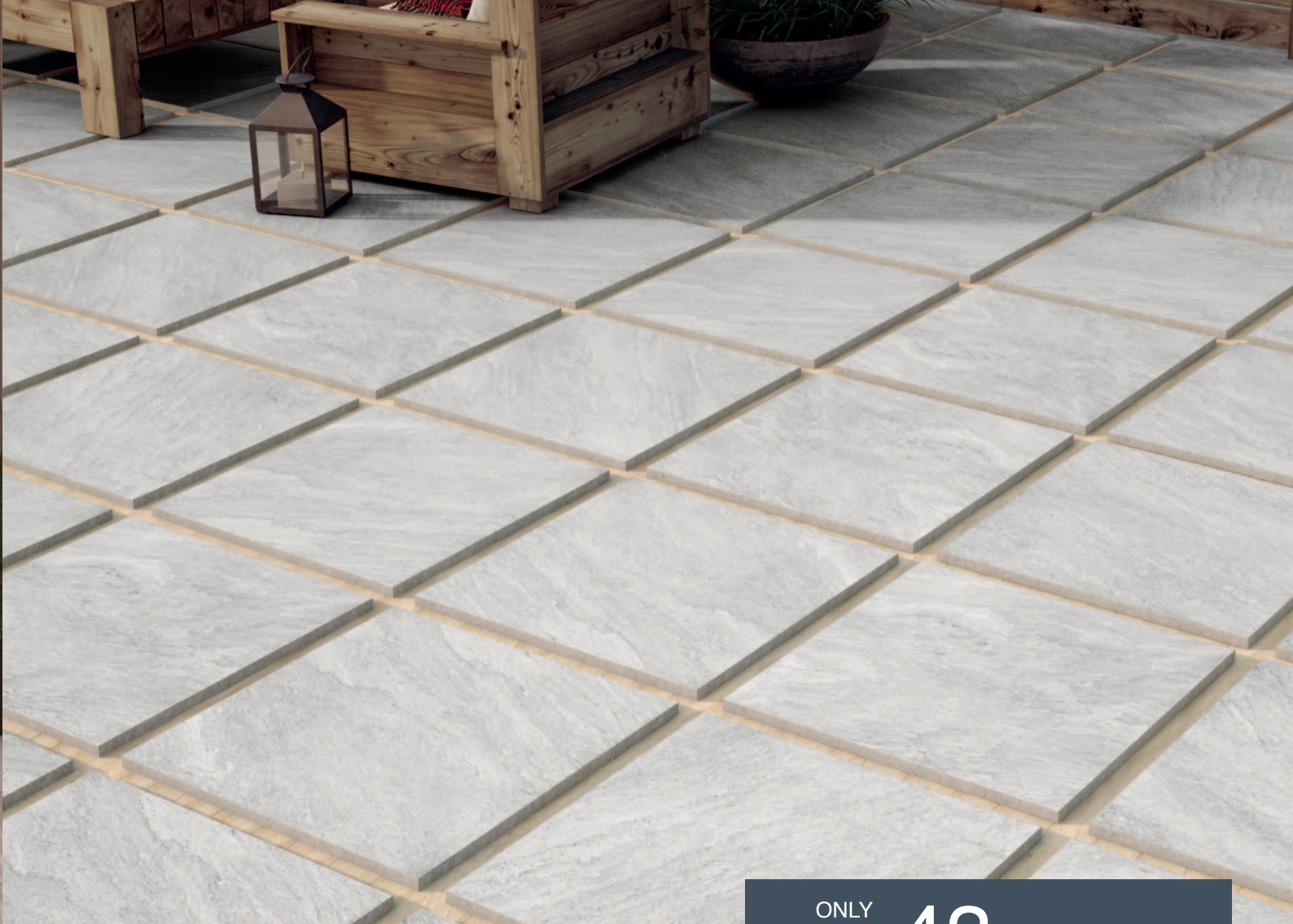
Porcelain Paving 593 x 593 x 20mm



Light Grey NB16935



Size (mm)	Suitable for	Finish	Material	Tile Thickness	Quantity per m2	Slip Rating	Polished	Rectified
593 x 593	Floor	Matt	Porcelain	20mm	2.84	PVT36+	-	Yes

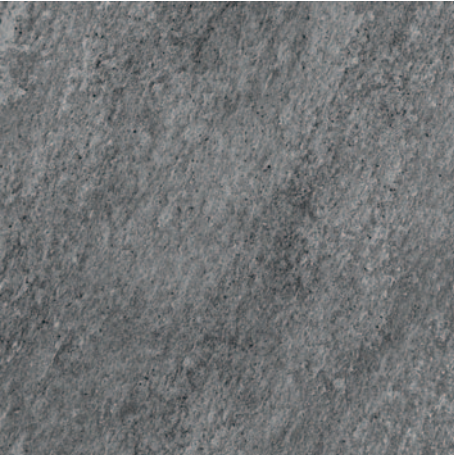


ONLY
£43.32m²
 ex VAT £36.10

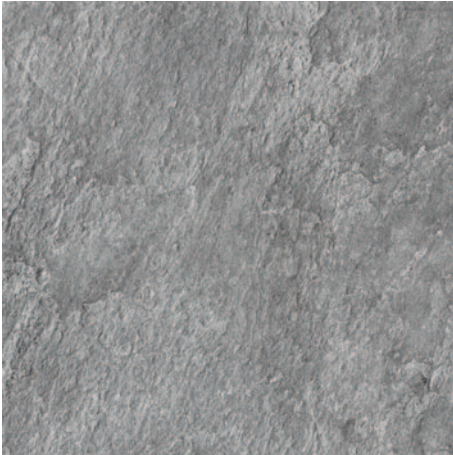
Combe

Combe Porcelain Paving offer the varied nature of stone to this porcelain paving collection offered in three hues

Porcelain Paving 610 x 610 x 20mm



Marengo NB16925



Grey NB16926



Blanco NB16927

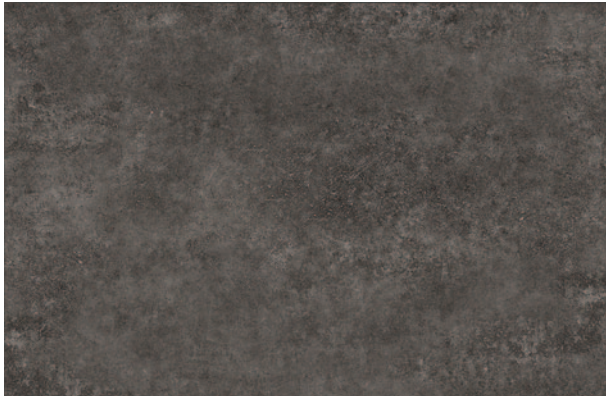
Size (mm)	Suitable for	Finish	Material	Tile Thickness	Quantity per m2	Slip Rating	Polished	Rectified
610 x 610	Floor	Matt	Porcelain	20mm	2.68	PVT36+	-	No

Slabstone

Opt for stunning exteriors this season with Slabstone Porcelain Paving, available in six distinct stone effect colours and an anti-slip surface.



Porcelain Paving 900 x 600 x 20mm



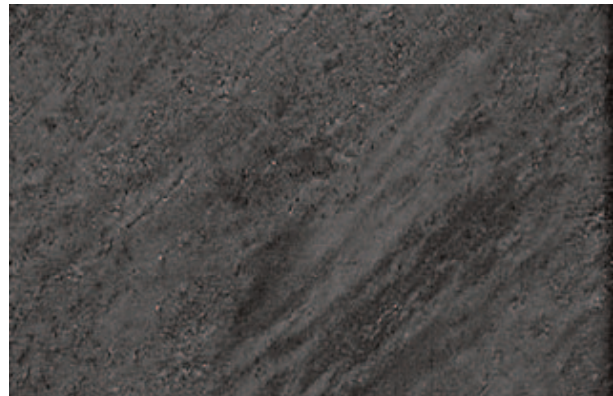
Alsace Grey NB16950



Limestone Beige NB16951



Quartz Grey NB16952



Quartz Anthracite NB16953



Slate Ash NB16954



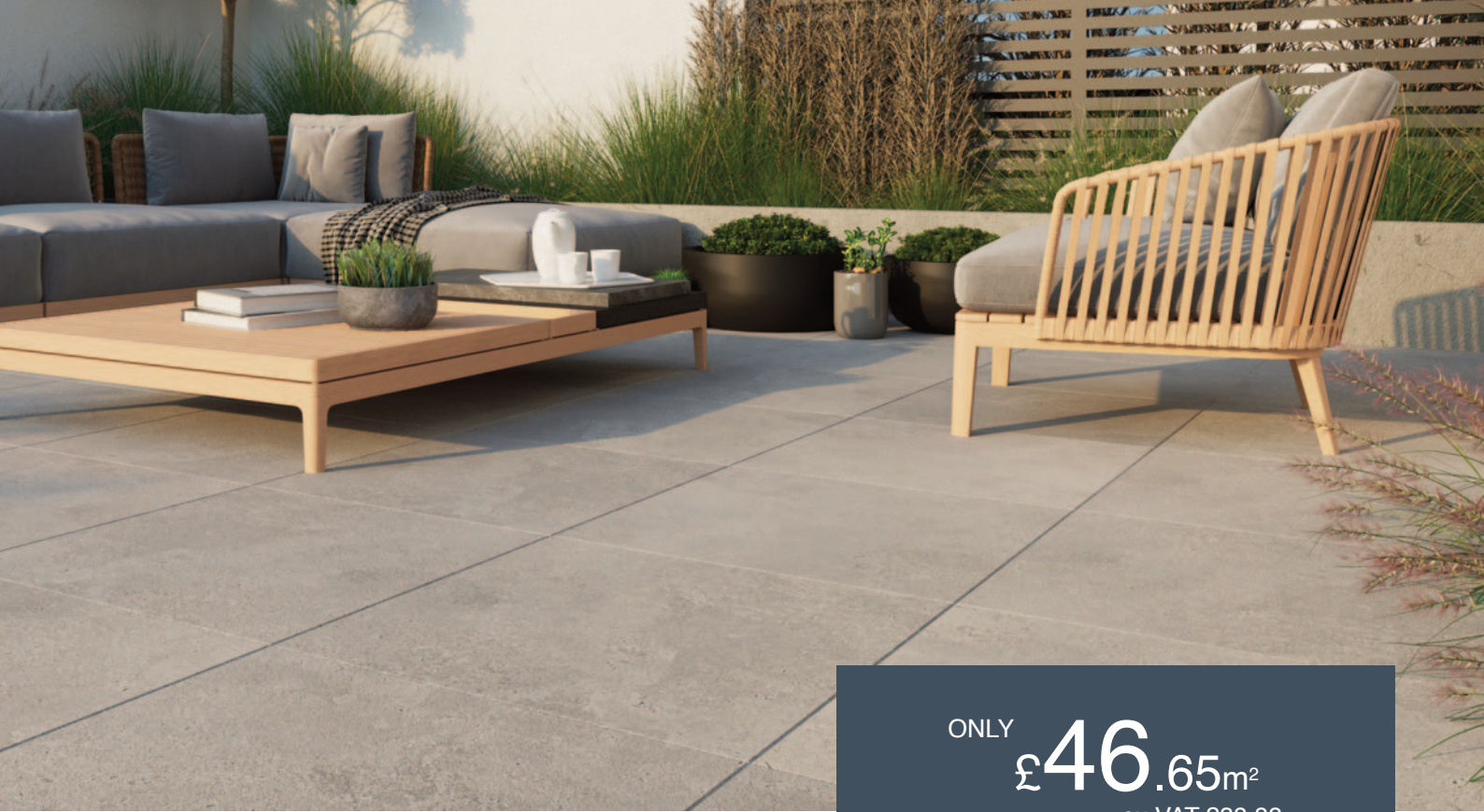
Slate Anthracite NB16955

Size (mm)	Suitable for	Finish	Material	Tile Thickness	Quantity per m2	Slip Rating	Polished	Rectified
900 x 600	Floor	Matt	Porcelain	20mm	1.85	PVT36+	-	Yes



ONLY
£49.99m²
ex VAT £41.66



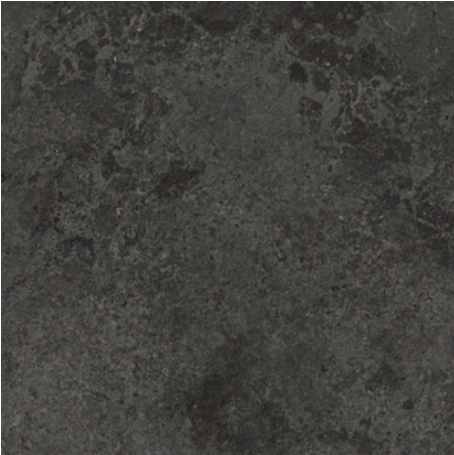


ONLY
£46.65m²
 ex VAT £38.88

District

District is an anti-slip, outdoor porcelain paving range that imitates the beauty of stone to the outdoors with the benefits and resilience of porcelain.

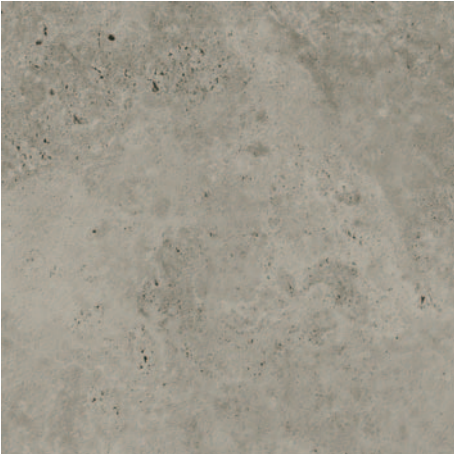
Porcelain Paving 593 x 593 x 20mm



Graphite NB16930



Grey NB16931



Light grey NB16932



Cream NB16933

Size (mm)	Suitable for	Finish	Material	Tile Thickness	Quantity per m2	Slip Rating	Polished	Rectified
593 x 593	Floor	Matt	Porcelain	20mm	2.68	PTV36+	-	Yes

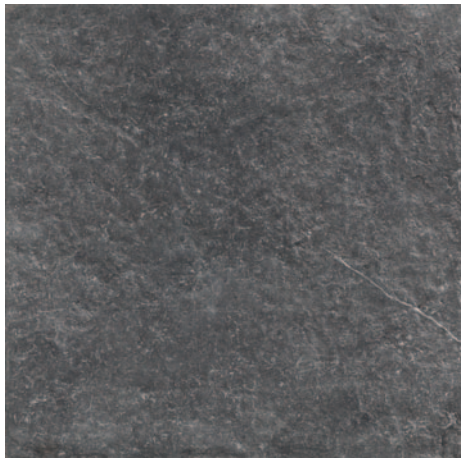


Priority

ONLY
£43.32m²
 ex VAT £36.10

a varied exterior porcelain paving suitable for all season weather with a distinct varied stone effect.

Porcelain Paving 610 x 610 x 20mm



Dark Grey NB16920



Grey NB16921



Sand NB16922

Size (mm)	Suitable for	Finish	Material	Tile Thickness	Quantity per m2	Slip Rating	Polished	Rectified
610 x 610	Floor	Matt	Porcelain	20mm	2.68	PVT36+	-	No

N&C

Nicholls & Clarke Group

N&C Building Products Ltd.
Registration Number: 140
Registered in England
www.nichollsandclarke.com



Distribution Centres, Trade Counters & Showrooms

N&C Building Materials
41-51 Freshwater Road
Chadwell Heath
Romford, Essex RM8 1SP
Tel: 020 8586 4600
Fax: 020 0586 4646

Unit 4
Cothill Close
Plympton
Plymouth PL7 1SR
Tel: 01752 339724
Fax: 01752 342746

Units 3 & 4
Cardiff Trade Park
Hadfield Road
Cardiff CF11 8AQ
Tel: 029 2039 0146
Fax: 029 2022 4356

Unit 4
Waterloo Industrial Estate
Flanders Road, Hedge End
Southampton SO30 2QT
Tel: 01489 779700
Fax: 01489 779701

Nicholls & Clarke

Est 1875

Trade Counters & Showrooms

Units 1A/B Alexander Place
Lower Park Road
New Southgate
London N11 1QD
Tel: 020 8361 6050
Fax: 020 8361 4757

Unit 14 Meridian Trading Estate
Bugsby Way
Charlton London SE7 7SJ
Tel: 020 8269 5960
Fax: 020 8269 5961

Units 10, 11, 14 & 15
Advent Business Park
Advent Way
Edmonton N18 3AF
Tel: 020 8807 3227
Fax: 020 8807 3223

Unit 8 Ascent Park
Edinburgh Way
Harlow Essex CM20 2HW
Tel: 01279 621980
Fax: 01279 621981

Unit 1 Cliffside Trade Park
Motherwell Way
Lakeside West Thurrock
Essex RM20 3XD
Tel: 01708 680180
Fax: 01708 680181

2 - 3 Albarn Close
Wyncolls Road
Severalls Park
Colchester Essex CO4 9HY
Tel: 01206 849300
Fax: 01206 845878

Unit 9 - 11
McDonald Business Park
Maylands Avenue
Hemel Hempstead
Hertfordshire HP2 7EB
Tel: 01442 234635
Fax: 01442 279501

Unit 8D Pompey Centre
Fratton Way Southsea
Portsmouth PO4 8TA
Tel: 02392 894599
Fax: 02392 894598

Unit 5 Tower Court
St. David's Road
Swansea Enterprise Park
Swansea SA6 8AL
Tel: 01792 797337
Fax: 01792 774019

25 Gunnels Wood Park
Gunnels Wood Road
Stevenage Hertfordshire SG1 2BH
Tel: 01438 315400
Fax: 01438 740338

Unit E5 Copley Hill Trading Estate
Whitehall Road **Leeds** LS12 1HE
Tel: 0113 243 5644

Leofric House, Off Phoenix Way
Waterman Road **Coventry** CV6 5TP
Tel: 02476 705300
Fax: 02476 705301

1 Frensham Road
Sweetbriar Industrial Estate
Norwich Norfolk NR3 2BT
Tel: 01603 409169

