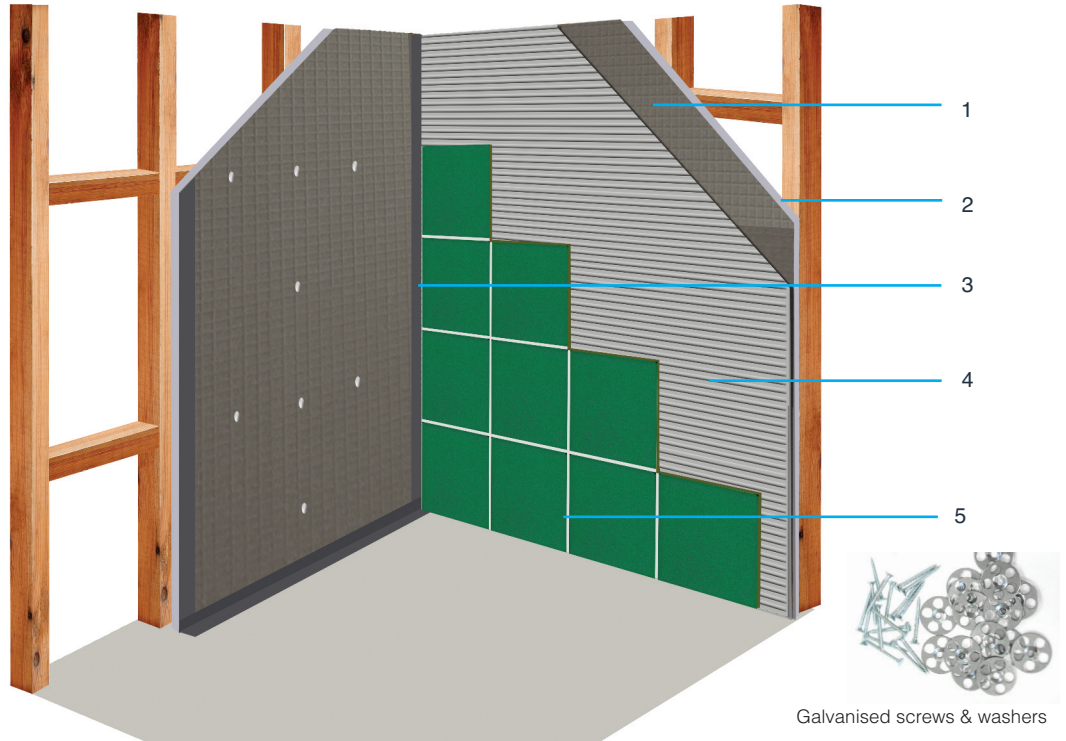
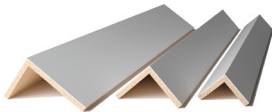


# How to tile onto...

## Tile Backer Board on Stud Partition Walls



Smooth, paintable pipe covers are a quick and effective solution for hiding away unsightly pipework, simply choose the correct cover size and cut to length. Run a bead of Nicobond PU Adhesive along the 2 leading edges and press firmly into position.



Galvanised screws & washers

1. Screw the tile backer board to stud work using Nicobond Galvanised Screws and Washers, taking care to screw down until the washer bites into the board. For boards less than 20mm thick, vertical studs should be set at maximum 300mm centres apart. For greater thicknesses 400mm centres are suitable.
2. All board edges must be supported by timber noggins and fixed using approx 12 fixings on a 1200 x 600mm board, or 21 fixings on a 2400mm x 600mm board. Fixings should be set at approx 300 - 400mm centres apart.
3. The joints between boards should be taped over using either Nicobond Jointing Tape for dry areas or Nicobond Wet Room Waterproof Tape and components for wet areas.
4. Spread the adhesive 3mm deep using a 6mm notched trowel onto the surface. Solidly bed tiles into adhesive using slight sliding action. Every so often use a spirit level or straight edge to check that the tiles fixed are flat. Allow to dry to recommended time.
5. Fill the joints between tiles with the recommended grout using a float grouter. Remove surplus grout from the surface with a sponge and smooth the joints with a rounded stick to achieve an even better finish.

\* Minimum thickness of board for screw fixing is 10mm.

\* Stud centres to be set subject to loading requirements.

### Recommended Tile Adhesives



Nicobond  
Waterproof  
Tile Adhesive

Nicobond  
Rapidflex

Nicobond  
Floor & Wall  
Adhesive and Enhancer

### Recommended Tile Grout



Nicobond  
Flexible Grout Plus



Nicobond  
Starlike Extreme  
Performance Grout

### Featured Products



Nicobond  
Tile Backer Board



## Manufacturing Tiling Solutions Since 1958

### N&C Tiles & Bathrooms Trade Counters & Showrooms

1A - 1B Alexander Place  
Lower Park Road, New Southgate  
**London N11 1ST**  
Tel: 020 8361 6050  
Fax: 020 8361 4757

8 Ascent Park, Edinburgh Way  
**Harlow, Essex CM20 2HW**  
Tel: 01279 621980  
Fax: 01279 621981

14 Meridian Trading Estate  
Bugsby Way, Charlton  
**London SE7 7SJ**  
Tel: 020 8269 5960  
Fax: 020 8269 5961

1 Cliffside Trade Park, Motherwell Way  
**Lakeside, West Thurrock**  
Essex RM20 3XD  
Tel: 01708 680180  
Fax: 01708 680181

16 Arlington Business Park  
Whittle Way, **Stevenage**  
Hertfordshire SG1 2BD  
Tel: 01438 315400  
Fax: 01438 740338

9 - 11 McDonalds Business Park  
Maylands, **Hemel Hempstead**  
Hertfordshire HP2 7EB  
Tel: 0845 2606 025  
Fax: 0845 2606 026

8D Pompey Centre, Fratton Way  
Southsea, **Portsmouth PO4 8TA**  
Tel: 02392 894599  
Fax: 02392 894598

5 Tower Court, St David's Road  
Swansea Enterprise Park  
**Swansea SA6 8QL**  
Tel: 01792 797337  
Fax: 01792 774019

### N&C Tiles & Bathrooms Distribution Centres, Trade Counters & Showrooms

N&C Building Materials  
41 - 51 Freshwater Road  
Chadwell Heath  
**Romford, Essex RM8 1SP**  
Tel: 020 8586 4600  
Fax: 020 8586 4646

C1 Cothill Trading Estate  
Plymouth, **Plymouth PL7 1SR**  
Tel: 01752 339724  
Fax: 01752 342746

B1 - B3 Sneyd Trading Estate  
Sneyd Hill, Burslem  
**Stoke on Trent ST6 2PA**  
Tel: 01782 575727  
Fax: 01782 575641

26 Colquhoun Avenue  
Hillingdon, **Glasgow G52 4BN**  
Tel: 0141 880 1200  
Fax: 0141 880 1212

4 Waterloo Industrial Estate  
Flanders Road, Hedge End  
**Southampton SO30 2QT**  
Tel: 01489 779700  
Fax: 01489 779701

3 - 4 Cardiff Trade Park  
Hadfield Road, **Cardiff CF11 8AQ**  
Tel: 02920 390146  
Fax: 02920 224356

2 City Park, Industrial Estate  
Gelder Road, **Leeds LS12 6DR**  
Tel: 0113 224 4630  
Fax: 0113 224 4631

2 - 5 Albarn Close  
Wyncolls Road, Severalls Park  
**Colchester, Essex CO4 9HY**  
Tel: 01206 844 161  
Fax: 01206 845 878



Follow us:  
NCGroupLtd



Find us:  
Nicholls and Clarke Group of Companies



Subscribe to us:  
Nichollsandclarke