

FREE

Interior inspirations

The latest in product trends and ideas for the creation of beautiful interiors



The latest wall and floor tile trends



Share and WIN £100 vouchers



The new outdoor living concept...



Don't miss out...

On inspiration, ideas and top tips and tricks for your upcoming projects.



Luxury wet rooms for less

We offer a wide range of attractive wet room options suitable for all bathroom spaces. All of our wet rooms are stylish and affordable, allowing you to create your dream bathroom.

We offer the complete wet room system, from start to finish with a broad collection of high quality, innovative wet room products that have been manufactured to work in perfect harmony with one another.



Visit www.nctilesandbathrooms.com/downloads to view our Wet Room Collection catalogue

Shower Decks | Wet Room Tanking | Subfloor Preparation | Wet Room Glass Shower Screens | Tiles | Accessories

Get inspired...

"We seek out whats on-trend so you can be confident in your choices"

Welcome to the new edition of 'Interior Inspirations' magazine where you will find a huge choice of tile and bathroom products to suit your space.

We engage in colour forecasting and anticipate future interior trends, ensuring that we meet your design aspirations that adhere to the tastes and direction of fashion. Our colour palette has been influenced by bringing together the insight and knowledge of leading colour specialists and collaborators within interiors.

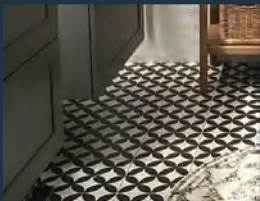
We also have some exciting news to share. We are excited to announce that we have won 'Excellence in Retail' for the 3rd time within 5 years as recognition for our award winning showrooms, products and service.

So, grab a hot drink, a cheeky treat and let us inspire you!



Mark Cooper
Nicholls and Clarke
Product Specialist

Browse by Trend...



Geometric



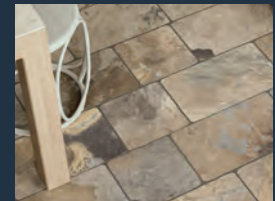
Woods



Artisan



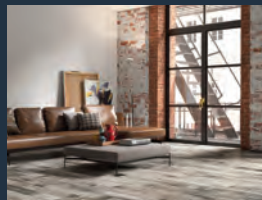
Marble



Country Cottage



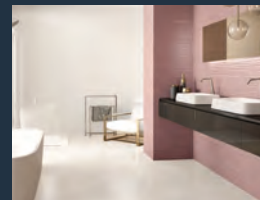
Noir Chic



Industrial



Outdoor Living



Skintones



Serene Blue

Our Services...



Creative Hub

Still stuck on ideas?
Visit our unique
Creative Hub*
where you will find a
wide range of inspiration.

Put together your design
scheme with our selection
of in house samples.



Low Prices Guaranteed

In the unlikely event that
you find identical tiles
cheaper within 10 days
of purchase we will
double the difference.

All our prices are price
checked giving you the
best value every time.



Nationwide Delivery

With a large private
fleet of delivery vehicles,
we can have your goods
delivered to you from
one of your local depots,

By our trusted and
friendly drivers.



Loan a Tile Service

If you see a tile you like
in store, featured in a
magazine, brochure or
online, make sure it's
the perfect match by
taking it home. We will
refund the deposit within
28 days if returned
undamaged.



FREE Parking

Take advantage of
our free parking
throughout our stores.

All with disabled
parking and accessible
for wheelchair users.



Salisbury

Image featuring: Salisbury Black Flower on White 200 x 200mm floor tiles - NB17300

Also available as White Flower on Black



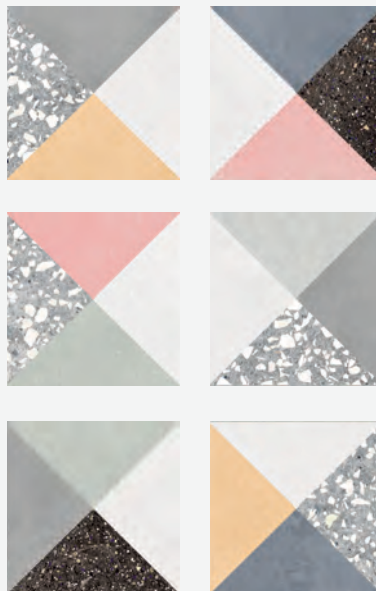
get the look...

Geometrics

A man-made approach to this trend, geometric patterns are a collection of shapes, repeating or altered to create a cohesive design inspired by geometric modelling. The psychology behind shapes allows for designers to control the mood of an environment. Squares signify balance and tradition, whilst triangles represent energy and a contemporary nature.

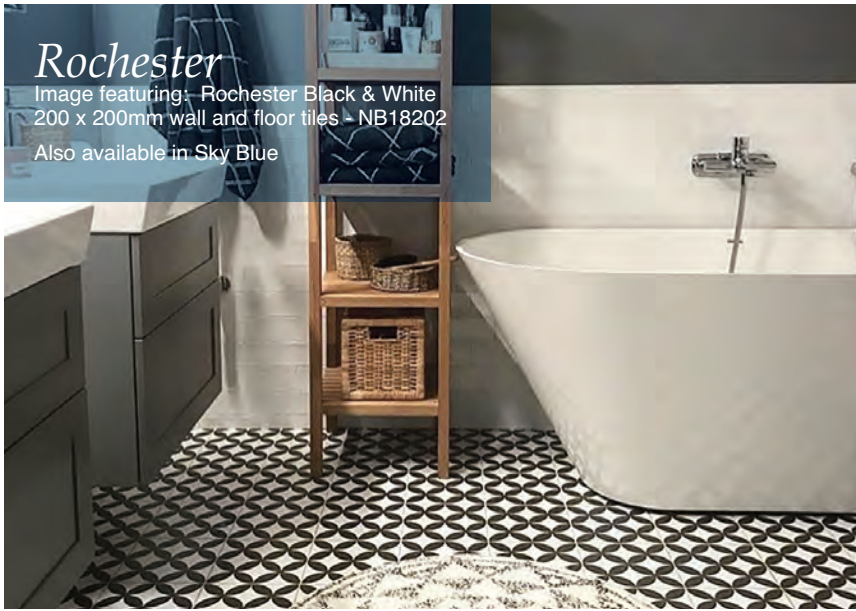
Sequence

Image featuring: Sequence Multi 300 x 300mm floor tiles - NB17292



Rochester

Image featuring: Rochester Black & White
200 x 200mm wall and floor tiles - NB18202
Also available in Sky Blue



St Albans

Image featuring: St Albans Sage
200 x 200mm floor tiles - NB18101



The perfect finishings

Opt for our gorgeous Sublime White
2 Drawer Basin Unit - S7004803



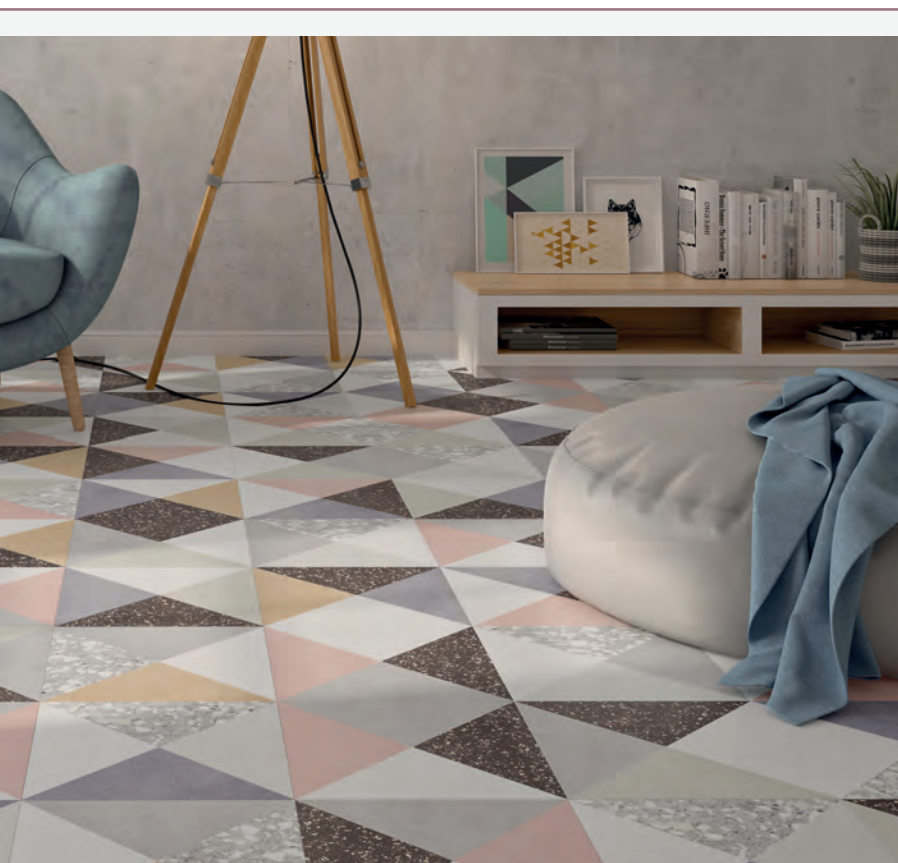
Mira Silver Galena
Shower - S8050326



Drift Anthracite Gloss Wall
Hung Cloakroom Basin Unit -
S7005659

Chichester

Image featuring: Chichester Black and
White 200 x 200mm floor tiles - NB18201



York Micro

Terrazzo Grey Floor Tile

Image featuring: York Micro Terrazzo Grey
200 x 200mm floor tiles - NB17305

For more Geometric inspiration, visit us
at your local store or visit us online at
www.nctilesandbathrooms.com



Polished Sugi Wood

Image featuring: Polished Sugi Wood Saddle Brown
155 x 980mm Floor Tiles - NB17808

Also available in Ice White, Smoke Grey, Midnight Black, Sapphire Blue and Deep Greige.

Wood Direction

Wood Direction White
700 x 400mm porcelain
wall and floor tiles

Right hand: NB18166



Natural Japanese Wood

Image featuring: Natural Japanese Wood Sapphire Blue
160 x 990mm Floor Tiles - NB17804

Also available in Ice White, Saddle Brown, Smoke Grey,
Midnight Black and Deep Greige.



get the look...

Woods

The unrepeating nature and beauty of wood continues to develop as a key trend for domestic and commercial interiors. The trend has evolved where the natural intentions of wood are manipulated with artificial processes to produce a unique statement design.

Parquet

Image featuring: Parquet Grey
100 x 700mm Floor Tiles - NB18563

Also available in Beige, Brown, White
and Black





Wood Living
 Image featuring: Wood Living Ice
 150 x 600mm Floor Tiles -
 NB17788
 Also available in Noce, Oak,
 Beech, Maple and Grey



Revival
 San Remo Oak 2 Door
 Column Wall Unit
 S7004850



Cuban
 Light Grey Floor
 Standing 2 Drawer
 Basin Unit - S7005550

Nicobond
 Silicone Sealant



Silver Grey



Light Coffee

Invite the beauty
 of nature into your
 home with our
 gorgeous wood
 effect ranges.

Drift

Craft Wood Wall Hung
 Cloakroom Basin Unit
 S7004862



Wood Grove
 Image featuring: Wood Grove Beige
 240 x 1200mm
 Porcelain Floor Tiles - NB18267
 Also available in White, Blue, Green and Brown



Woodstyle

Image featuring: Woodstyle Blanc Chevron
 Mosaic 329 x 396mm NB18408

Also available in Natural, Brune and Greige

Shades

Image featuring: Shades Bosque 70 x 140mm Wall Tiles - NB17009

Also available in Ambar, Atlantico, Branco, Cinza Claro, Cinza Escuro, Marinho, Nordico, Petroleo, Preto, Sangue De Boi and Turquesa



get the look...

Artisan

This trend brings together the love of pattern, tradition and authenticity whilst being intrigued by products inspired by Moroccan culture. Designs often feel domesticated and give a sense of comfort. Bold colours inject energy into interiors, whilst delicate structures add fluid femininity to this trend.

Casablanca

Image featuring: Casablanca Multi Decor - NB17255



Scale

106 x 120mm wall tiles
Black NB18111 - White NB18110



Egg

Wall Hung Toilet
7006074



Egg

Floor Standing Basin S7006078



Shades Arabesque

Image featuring: Shades Arabesque Ambra 150 x 150mm Gloss Wall Tiles - NB17165

Also available in Artico, Atlantico, Bosque, Branco, Cinza Claro, Cobalto, Menta, Nordico, Perola, Preto and Sangue De Boi.



Shades Scales

Image featuring: Shades Scales Cobatto 135 x 150mm wall tiles - NB17156

Also available in Ambar, Atlantico, Branco, Cinza Claro, Cinza Escuro, Marinho, Nordico, Perola, Preto, Sangue De Boi, Bosque, Artico and Menta



Essence

Chrome Waterfall Basin Mixer - S7007451

Available in a variety of colours



Lavish

OS12 Polished Tiles



Kasbah Mosaic

Image featuring: Kasbah Multi Moroccan Mosaic 300 x 300mm - NB17433



Castello

Image featuring: Castello Prague Blue Lapato 200 x 1200mm wall and floor tiles NB17836

Also available in Balmoral White, Windsor Black & Chambord Grey



Future Stone

Image featuring: Future Stone White 270 x 420mm wall tiles - NB18390

Also available in Bone and Grey



get the look...

Marble

Marble effects continue to grow as it proves its timeless appeal with an evolution of carrara, with more warmer tones and veining. A reinvention of the trend see darker colours with contrasting details taking precedence with a greater uptake of different formats including slabs for an inherent, opulent look we all love.



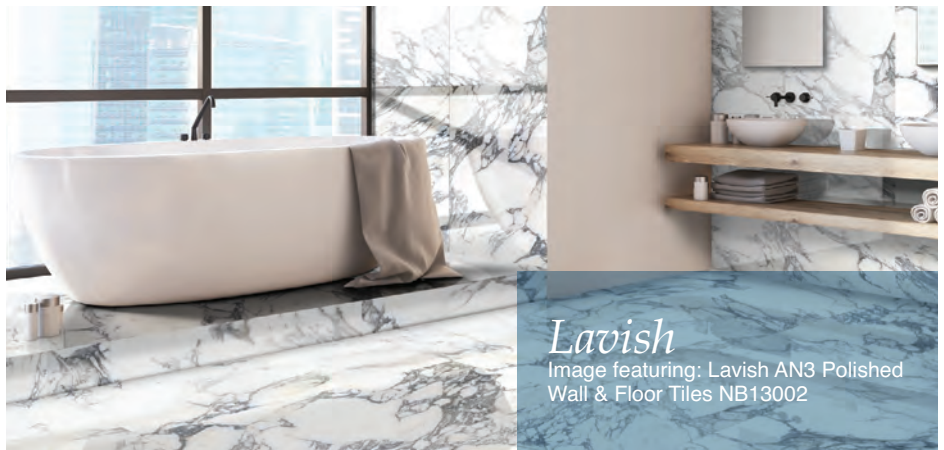
Lavish

Image featuring: Lavish SN2 Polished Floor Tiles NB13001



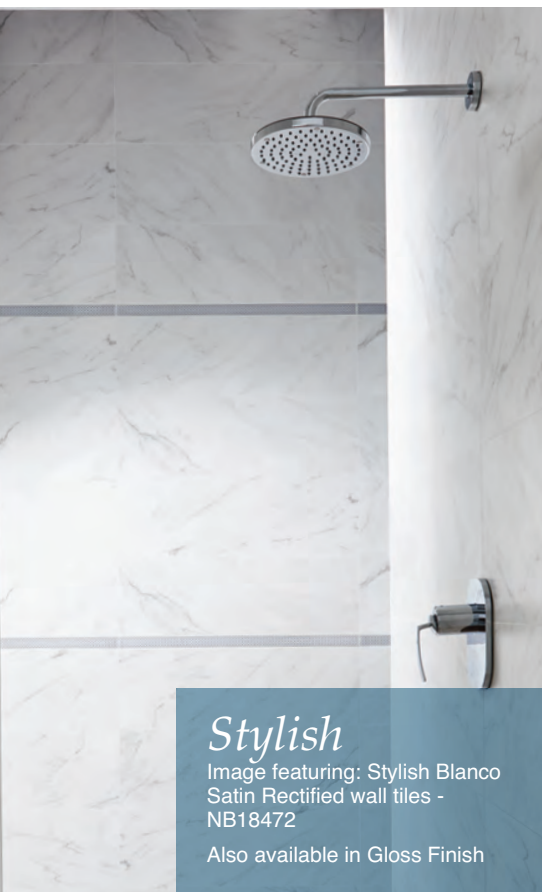
Marbellous

Image featuring: Marbellous Statuario Arabescato 300 x 600mm porcelain floor tiles - NB17851
 Also available in Orobico Silver, Carrara Venatino, Dolomite Bianco, Onice Bianco and Amani Grey



Lavish

Image featuring: Lavish AN3 Polished Wall & Floor Tiles NB13002



Stylish

Image featuring: Stylish Blanco Satin Rectified wall tiles - NB18472
 Also available in Gloss Finish



Vision

Image featuring: Vision White wall and floor tiles - NB17245



Metro Underground Carrara Bevel

200 x 100mm Wall Tiles - NB1765



Castello Balmoral

White Lapato Polished Wall and Floor Tiles - NB17820



Essence

Fixed Shower Head S7007500

Tuscan Flagstones Slate

Image featuring: Tuscan Flagstones - Slate 300 x 500mm Autumn Grey Floor Tiles - NB17679 and Tuscan Flagstones Slate 500 x 500mm Autumn Grey Floor Tiles - NB17678



Tuscan Flagstone Salento

Image featuring: Tuscan Flagstone Salento Pale Grey Floor Tiles 300 x 500mm - NB17673 and Tuscan Flagstone Salento Pale Grey Floor Tiles 500 x 500mm - NB17672

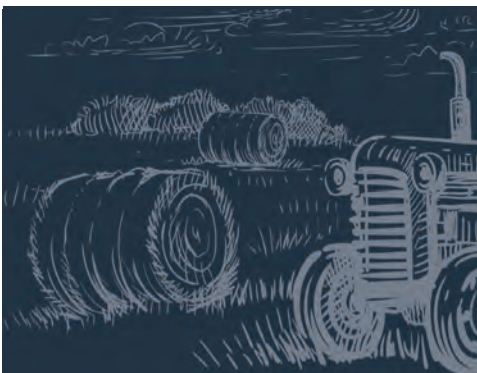
Complete the look with our Nicobond Silicone Sealant available in a variety of stylish colours.



Era Lustre

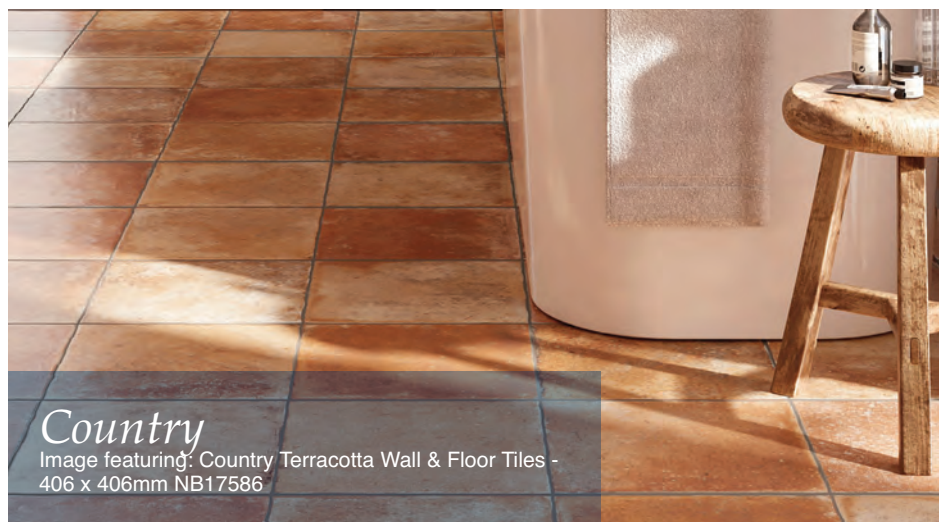
Image featuring: Era Lustre Grey NB18113

Also available in White, Black, Cream, Green and Blue



get the look... Country Cottage

A trend that celebrates the imperfections of aged materials such as stone, handmade tiles, multi sizes and variations. The advancements in tile production technology has enabled superb attention to detailing for the production of authentic designs that offer a country-cottage or farmhouse feel.



Country

Image featuring: Country Terracotta Wall & Floor Tiles - 406 x 406mm NB17586

Piano

Image featuring: Piano Gloss White Wall Tiles - NB18106
Also available in Light Grey and Dark Grey



Lincoln

Image featuring: Sea Blue Lincoln 200 x 200mm
wall and floor tiles - NB18200



Victorian

Bath Shower Mixer
S7007346



Worcester

Wash Basin - S7005959

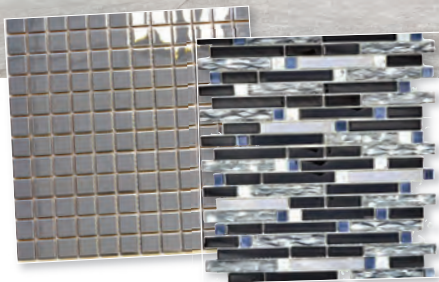


Low Level Toilet
S7005948

Quarzi

Image featuring: Quarzi Light Grey Rectified Porcelain
600x600mm NB18241

Also Available in: White, Beige and Dark Grey



Mini Mirror Mosaic
NB17414

Conrad Black & Silver
Mosaic - NB17431



Noir Screens

Image featuring Noir Clear Glass Panels
Available in a variety of styles and configurations

get the look... Noir Chic

The love for darker tones have been making their way back into the interior palette. This trend is a take on modern mono's, with a restrained colour palette that provides greater opportunity for decor with black profiling, black matt taps and lots of greenery.

A truly sophisticated trend inspired by a 1920's set up.



Natura Porcelain

Image featuring: Natural porcelain White NB17275, Grey NB17278 and Anthracite NB17281 300 x 600mm



3D Stone

Image featuring: 3D Stone Black 170 x 520mm Wall Tiles NB17544

Also available in Sand, Magma, Grey and White

Noir Taps



Thermostatic Shower Mixer - S7007602

Bath/ Shower Mixer S7007600



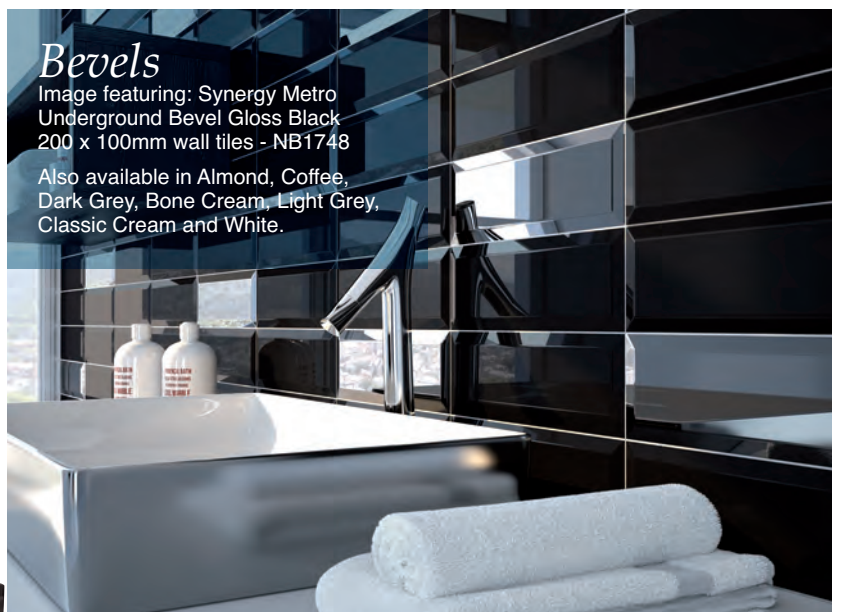
Basin Mixer S7007601



Soap Dish S6100851



Double Towel Rail S6100843



Bevels

Image featuring: Synergy Metro Underground Bevel Gloss Black 200 x 100mm wall tiles - NB1748

Also available in Almond, Coffee, Dark Grey, Bone Cream, Light Grey, Classic Cream and White.



Chevrona

Image featuring: Chevrona Black Matt 186 x 52mm Left (NB18122) and Right (NB18123) Wall Tiles and Chevrona Black Gloss 186 x 52mm Left (NB18124) and Right (NB18125) Wall Tiles

Also available in White and Dark Grey

Natural Japanese Wood

Image featuring: Natural Japanese Wood Deep Greige
160 x 990mm floor tiles - NB17805

Also available in White, Smoke Grey, Saddle Brown,
Midnight Black and Sapphire Blue



get the look...

Industrial

A growing trend often used in loft apartments, modern homes and reclaimed spaces. Industrial inspired design showcases neutral tones, wood and metal effects and utilitarian objects and surfaces.



Metropolis Porcelain

Image featuring: Metropolis Porcelain Black
600 x 1200mm Floor Tiles - NB17573

Also available in White, Steel and Copper



Firenze

Image featuring: Firenze White 75 x 250mm Wall Tiles - NB17560

Also available in Blue, Rust and Cotto



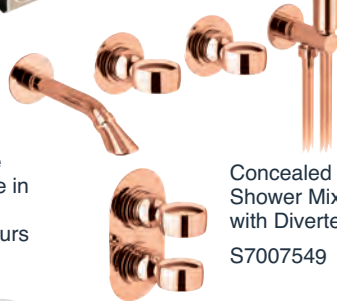
Heritage
Tallboy Unit S7005234



Rose Gold Trim

Rose Gold

Wall Mounted Bath Mixer
- S7007550



Nicobond Silicone Sealant - available in a variety of colour co-ordinating colours

Concealed Shower Mixer with Diverter
S7007549



Black



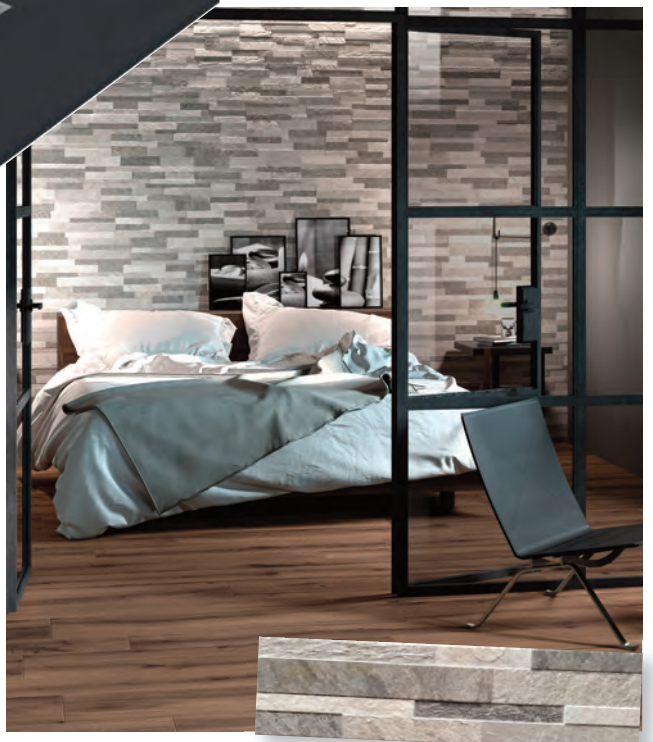
White

Ultima Shower Tray
Deep Grey



Whitewood

Image featuring: Whitewood Glazed Porcelain White 200 x 1140mm Floor Tiles - NB18090



Quarzi Split Face

Image featuring: Quarzi Split Face Grey Mix NB18256

Also available in White

Chateau

Image featuring: Chateau Wood Smoke
300 x 1200 x 20mm NB17656 Outdoor Porcelain Paving
Also available in Tobacco and Capuccino



Dolomiti

Basalto Wall Tiles
NB18315
1200 x 400 x 20mm

Basalto Wall Tiles
NB18311
1200 x 600 x 10mm

Land

Image featuring: Land Warm White
600 x 600 x 20mm NB18425 Outdoor
Porcelain Paving

Also available in Light Grey, Beige, Dark
Grey and Black



get the look...

Outdoor Living

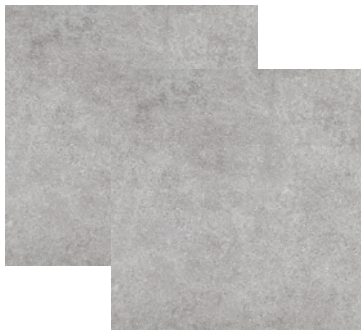
As we gain inspiration and invite the beauty of nature into our home, this trend reverses this ideal and expands our home spaces into the outdoors.

As the importance of relationships continue to grow, our outdoor spaces become places for social enjoyment.



Marble Stone

Image featuring: Marble Stone Calacatta 600 x 600 x 20mm
Outdoor Porcelain Paving - NB17751



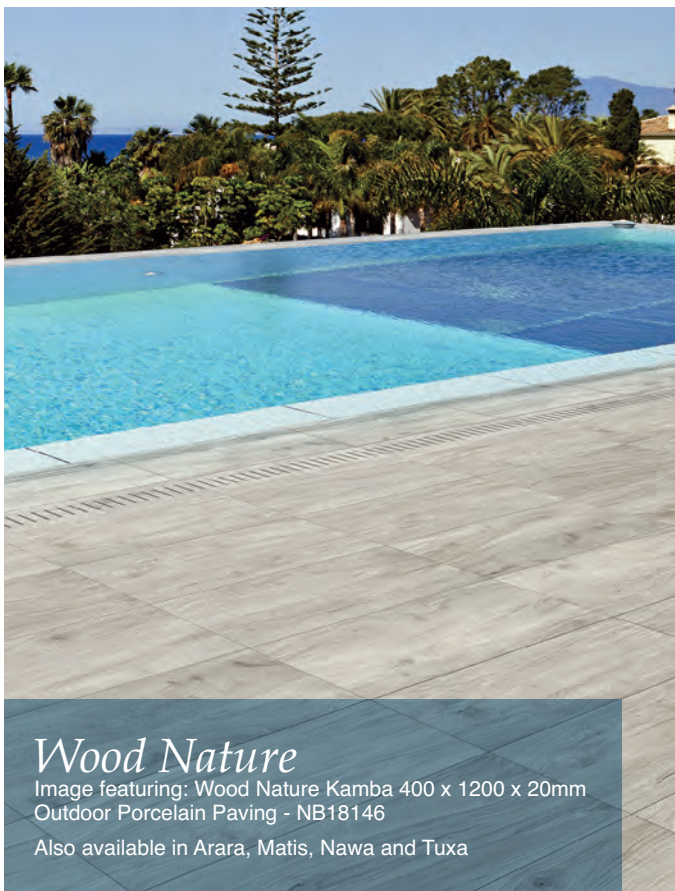
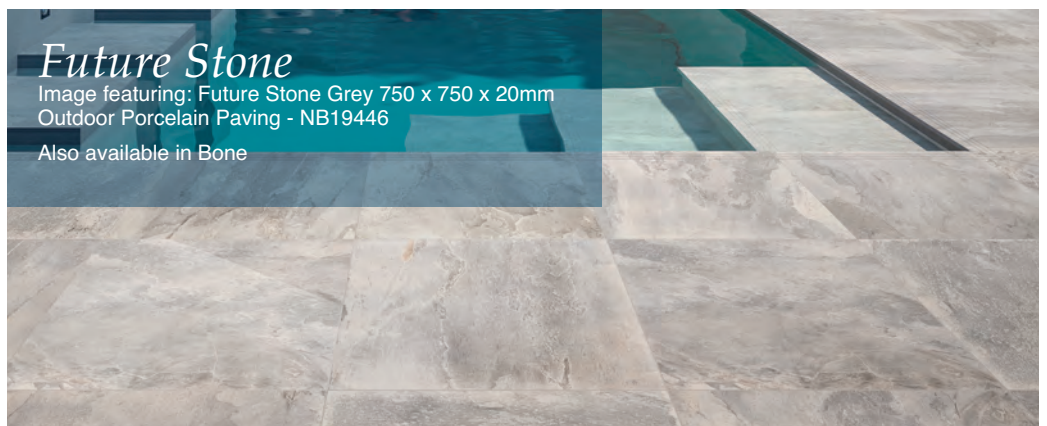
Landscape

Pearl Grey 600 x 600 x 20mm Rectified
Outdoor Porcelain Paving - NB18655

Future Stone

Image featuring: Future Stone Grey 750 x 750 x 20mm
Outdoor Porcelain Paving - NB19446

Also available in Bone



Wood Nature

Image featuring: Wood Nature Kamba 400 x 1200 x 20mm
Outdoor Porcelain Paving - NB18146

Also available in Arara, Matis, Nawa and Tuxa

Wood Space

Image featuring: Wood Space Anti-Slip Walnut 202 x 802mm
Outdoor Porcelain Paving - NB17666

Also available in Light Beech, White Oak and Space Grey

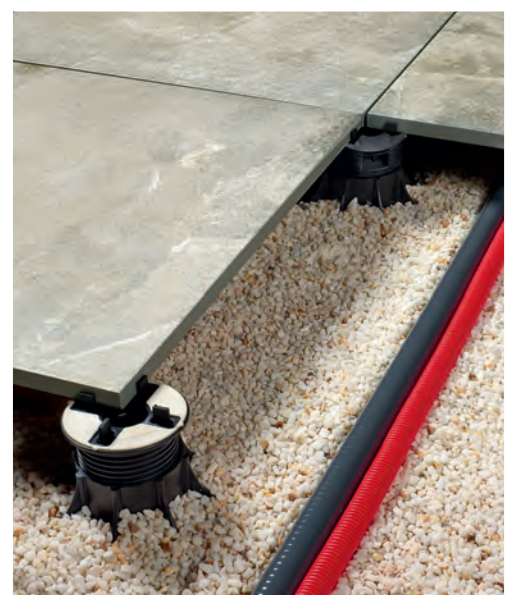


Create beautiful outdoor spaces in days, not weeks



Create the perfect outdoor spaces

The Nicobond Terra Level Pedestal System offers an innovative solution for a stable, high-quality and long term fixing of raised floors using 20mm porcelain tiles. This is the ideal system for patios, balconies and other exterior living spaces.



Easy to use



Quick to install



Cost Effective



Tidy Finish



Dry Fit System

Making the most of outdoor spaces with our easy to use pedestal system



Why opt for N&C Porcelain Paving?

Aside from the beautiful outdoor porcelain paving options available, the outstanding technical characteristics makes this an unbeatable choice when deciding on your outdoor refurb.



High Strength



Acid Resistant



Frostproof



Flame Resistant



Salt Resistant



Stain Resistant



Scratch Resistant



Mould/Moss Resistant



Woodstyle

Image featuring: Woodstyle Blanc 200 x 1200mm Wall & Floor Tiles - NB18400

Also available in Natural, Greige and Brune

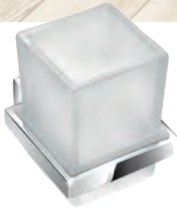


Wood Passion

Image featuring: Wood Passion Ice 150 x 900mm Floor Tiles - NB19278

Also available in Beige, Brown, Taupe and Smoke

Mono Tumbler Holder S6000081



Ely Colours

Image featuring: Ely Colours wall and floor tiles 200 x 200mm NB18100



get the look...

Skintones

Blush, clay and peach hues resonating cosmetic neutrals combine with variations of white to form this soft and feminine palette. Today, as a society we partake in artificial approaches to conceal, contour and blend in an imperfect world to create the idealistic illusion of self and our interiors. An ideal alternative approach to neutrals.

Contour

Image featuring: Contour Makeup
400 x 1200mm Structured Wall
Tiles - NB17592 and Contour
400 x 1200mm White Lines
NB17590



Also available in White
Opt for our Contour Silver
Laurent Glitter Decor Detail
for a beautiful feature wall -
NB17593



Rose Gold Taps

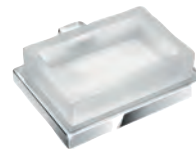
Image featuring: Rose Gold Basin
Mixer S7007545
Also available as High Rise Basin
Mixer, Bidet Mixer, Concealed
Shower Mixer, Wall Hung Basin
Mixer, Concealed Shower Valve,
Shower Kit Bath Mixer, and Fixed
Shower Head



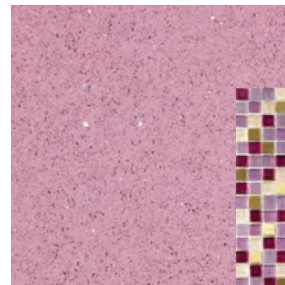
Nicobond
Silicone Sealant
Limestone



Shower Bath Mixer
S7007531

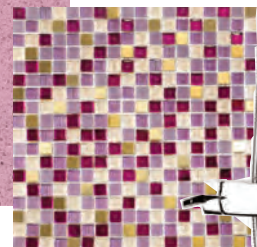


Mono Soap Holder
S6000080



Gulfstone Quartz

Violet - 600 x 600mm
NB18038



Clarity

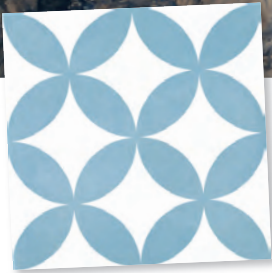
Berry/Gold Mosaic
300 x 300mm- NB19608



Castello

Image featuring: Castello Prague Blue
Lapato 200 x 1200mm Wall & Floor Tile -
NB17836

Also available in Windsor Black,
Balmoral White and Chambord Grey



Rochester

Sky Blue
Wall & Floor Tile
NB18203



Natural Japanese Wood

Image featuring: Natural Japanese Wood
Ice White 160 x 990mm Floor Tiles - NB17800

Also available in Smoke Grey, Saddle Brown,
Midnight Black, Sapphire Blue and Deep Greige

get the look...

Serene Blue

A cool and calming hue that creates a nurturing environment and positive space for our wellbeing. Manor blue interprets our intent on purification within nature as our world and the way we treat it becomes apparent.

Natural Japanese Wood

Sapphire Blue
Floor Tiles
NB17804

Cosmopolitan

Bath Shower Mixer -
S7007522



Future Stone

Grey NB19405

Sublime

2 Drawer Basin Unit Navy Blue
S7004805



Eclipse

Image featuring: Eclipse Blue Tanzanite Natural Wall & Floor Tile 200x1200mm NB18190



Truro

Truro Blue Mixed Pattern Wall & Floor Tile 200x200mm NB18205

Lavish

N11 Polished 2400 x 1200mm Wall and Floor Tiles



Sky

Image featuring: Sky Rise Blue 500 x 200mm Decor Wall Tiles (NB17911) and Sky Blue 471 x 471mm Floor Tiles (NB17916). Also available in White



Heritage

Image featuring: Denim Ash Tall Boy 2 door unit S7005235 2 door basin unit S7005210, 1TH basin S7005240 back to wall WC Unit S7005205 & Mirror S7005220 Also available in Okasha White and Indigo Ash



Our most commonly asked questions...

Q How do I maximise my bathroom space?

A Choose your bathroom furniture wisely. If you are working with a small bathroom space, consider back to wall and wall hung toilets, basins and furniture such as our Drift Cloakroom units, as this is a great way to increase space for easy manoeuvring. Also, think about combining both the shower and bath into one with our range of L and P shape shower baths to free up more space.



Q How do I achieve a clutter free bathroom?

A Innovative bathroom storage solutions such as our Revival 2 Basin Units which come complete with a drawer organiser are ideal for those who have a lot of bathroom essentials but nowhere to put them. Having a place for everything to go after it's been used will automatically make your bathroom clutter free.



Q What's the best way to create a feature wall?

A Feature walls can be created using either the colour contrast between tiles for example using our White Colour Me Wall Tiles alongside our Raspberry Colour Me Wall Tiles or simply a unique tile range that creates an instant statement like our Shades tile collection.



Do you have a question which you would like our team to help you with?

Simply ask us on social media using our #NCQuestionsAndAnswers hashtag so that we can help to give you any advice or tips you may need, plus be in with a chance of having your question featured in our next magazine.

there's always time for...

Victoria Sponge Cake

Get baking with 'Miss Meg' and you'll have the greatest excuse to invite your friends and family round to show off your fabulous new interiors. Put the kettle on and serve up this undeniable favourite.

Step 1.

Heat oven to 190C/fan 170C/gas 5. Butter two 20cm sandwich tins and line with non-stick baking paper.

Step 2.

In a large bowl, beat 200g caster sugar, 200g softened butter, 4 beaten eggs, 200g self-raising flour, 1 tsp baking powder and 2 tbsp milk together until you have a smooth, soft batter.

Step 3.

Divide the mixture between the tins, smooth the surface with a spatula or the back of a spoon.

Step 4.

Bake for about 20 mins until golden and the cake springs back when pressed.

Step 5.

Turn onto a cooling rack and leave to cool completely.

Step 6.

To make the filling, beat the 100g softened butter until smooth and creamy, then gradually beat in 140g sifted icing sugar and a drop of vanilla extract (if you're using it).

Step 7.

Spread the buttercream over the bottom of one of the sponges. Top it with 170g strawberry jam and sandwich the second sponge on top. I like to add fresh strawberries in with the jam as a twist.

Step 8.

Dust with a little icing sugar or use up any leftover buttercream for an indulgent serving. Don't forget to add on your desired toppings and edible flowers for a real show stopper!



Keep your Victoria Sponge Cake in an airtight container and eat within 2 days.

SHOPPING LIST

200g caster sugar
200g softened butter
4 eggs, beaten
200g self-raising flour
1 tsp baking powder
2 tbsp milk

For the filling

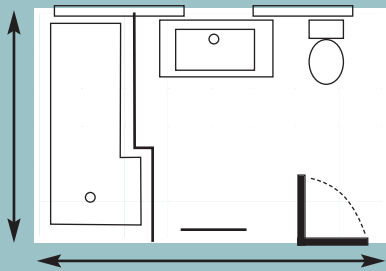
100g butter, softened
140g icing sugar, sifted
drop vanilla extract (optional)
half a 340g jar of strawberry jam
icing sugar, to decorate



Share your experience with us...

Complete Kitchen Transformation

ROOM PLAN



Don't forget!

to measure up before you make any purchases. Sizing is extremely important when choosing new bathroom furniture to ensure that there is enough room for the products you would like with plenty of room to maneuver.



Snap & share

Instagram blogger, @lula_tahlula shares her gorgeous kitchen transformation with us which showcases the N&C Piano White Gloss 50 x 200mm on the walls and wood effect floor tiles.

Layed in herringbone fashion, N&C Piano is used to create a decorative feature throughout the kitchen with contrasting grout.

Lula recently completed her kitchen renovation and is 'thrilled with her results and is happy that she was able to create the classic yet contemporary look she was aiming for'.

Our Piano Tile Collection feeds the desire of stylish linear formats. Available in three on-trend colours, and two popular sizes this tile range is suitable for all kinds of projects and colour schemes.

Lula also purchased her kitchen wood effect floor tiles from us, after being spoilt for choice with our huge collection of wood inspired tile ranges.



“ The Diano Gloss White Wall Tiles paired with a dark grout and laid in a herringbone pattern gave my kitchen the classic yet contemporary look I was aiming for. Thrilled with the results! ”

Snap & Share...

We are giving away £100 worth of shopping vouchers to one lucky prize drawer winner.

All you have to do is...

1. Take a snap of your project where you have used our products
2. Tag us in the post #NCProject
3. The winner will be picked at random



You've got to be in it to win it Get sharing!



N&C Nicobond



@NC_Nicobond



@nc_nicobond

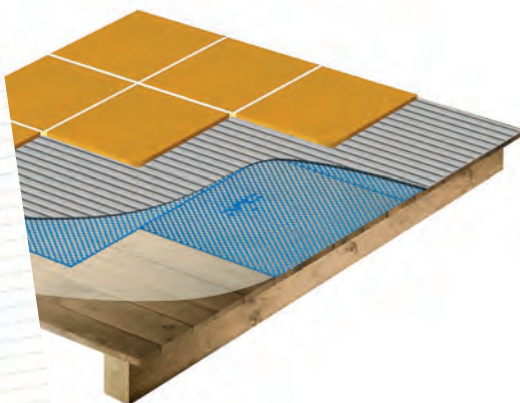


Our step by step guide on...

Tile on to wooden flooring

Things you will need:

- Nicobond PVA
- Brush or Broom
- Nicobond Roller
- Clean Cloth
- Scissors
- Nicobond Rapidflex S1
- Tile Adhesive
- Nicobond Notched Edge Trowel
- Nicobond Flexible Grout Plus or
- Nicobond Starlike Extreme
- Performance Grout
- Nicobond Grout Float
- Nicobond Hydro Sponge
- Nicobond PlasticPly™



The majority of homes within the UK are made from timber constructions. Timber has a tendency to warp, shrink and experiences movement over a period of time. Sticking a ceramic tile directly onto a moving floor can potentially cause it to crack. Nicobond PlasticPly™ is an easy to use, self adhesive sheet that is applied directly over the timber to absorb any lateral movement that is natural in timber. This protects the tile installation and makes your bathroom looking as gorgeous as ever!

Our technical product specialist, John Swain explains how to install Nicobond PlasticPly™



1. Ensure the floor is clean and free of dust, sweeping first and then wiping across with a damp cloth.



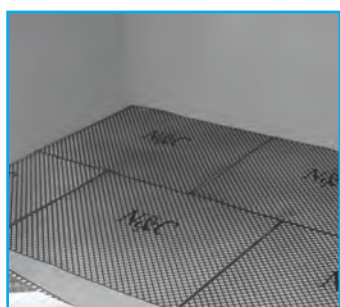
2. Then the floor needs to be primed with a solution of cold clean water mixed with Nicobond PVA. The ratio is 4 volumes of water to 1 volume of Nicobond PVA. (As a guide, 1 litre of water mixed with 250ml of Nicobond PVA will cover 5-6m²). Use a brush or roller to apply the solution in a very thin coat.



3. Once the primer has thoroughly dried, remove the release paper from the back of the PlasticPly sheet and stick down to the floor, one sheet at a time, starting in the corner furthest from the door/ exit point from the room.



4. If you need to shape or cut the PlasticPly™ to fit round an obstacle, use a pair of sturdy scissors. The sheets need to be stuck down in a staggered, brick bond formation.



5. When the whole area to be tiled is covered in PlasticPly™, the floor is ready to be tiles.



6. Mix up the Nicobond Rapidflex S1 Tile Adhesive, following the instructions on the bag. The pot life is about 30 minutes, so only mix up what you can comfortably apply in that time. Apply the adhesive to the PlasticPly™, working it into the diamond shapes with the flat edge of the trowel.



7. Apply another layer and lightly comb through with the notched edge of the trowel in straight parallel lines. Fix the tiles with a slight twisting action, ensuring a "full bed" of adhesive (80% of the tile or more) has been achieved.



8. Allow the adhesive to cure, preferably overnight, before grouting with Nicobond Flexible Grout Plus or Nicobond Starlike Extreme Performance Grout. Once fully cured and finished, your floor is now ready for use.

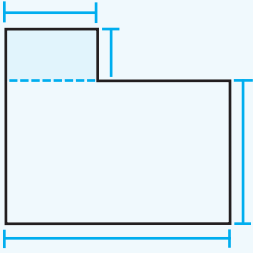
Please note that existing boards must remain rigid, stable and capable of supporting additional loads without flexing prior to installation. Boards should have sufficient ventilation beneath them. Any loose boards should be secured with appropriate sized screws (not nails) prior to applying Nicobond PlasticPly. If there is excessive flexing or movement within the floor the addition of extra noggins may be required.

Your guide to measuring

1. Create a drawing of the floorplan/area in the room you are measuring. It doesn't have to be to scale, but the more accurate it is, the more useful it'll be for recording purposes.
2. Measure the length of the room or area you want to tile.
3. Measure the width of the room or area you want to tile.
4. Multiply the width by the length to get the total square footage of the area you want to tile.

What if the area to tile isn't squared?

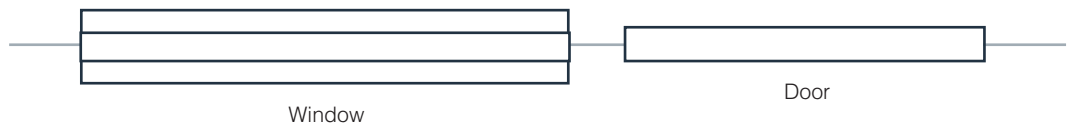
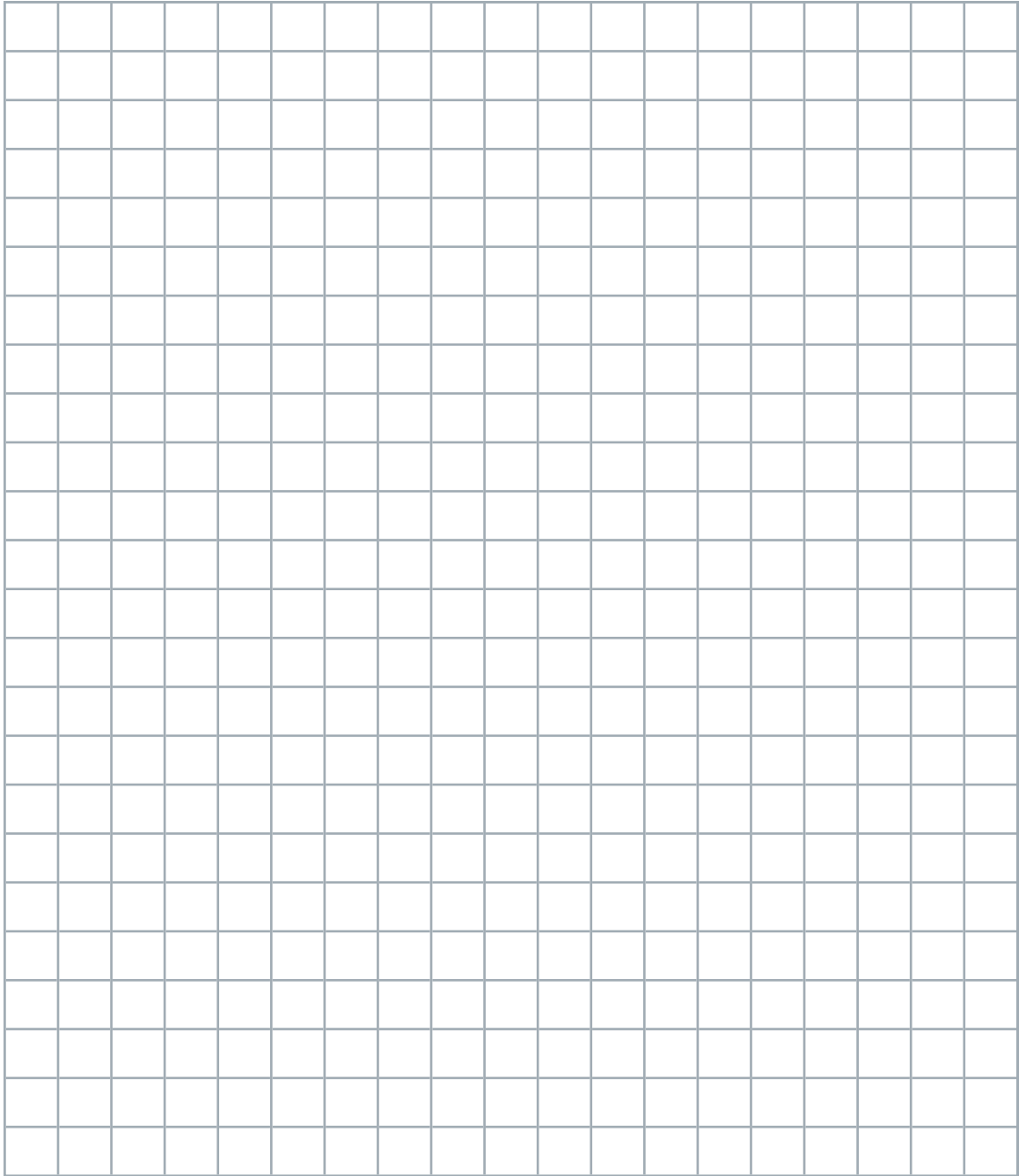
If the area is not square, split the room into smaller areas and measure the length and width of each. Then, add the area of the smaller squares together. If there is an object in the middle of the floor, such as a bathtub or a kitchen island, measure the length and width of the area covered by the object and subtract it from the total square footage.



5. Multiply the total square footage by 10% (or .10 on a calculator) and add this to the total square footage.

Why do I need to add 10%?

We always recommend purchasing 10% more than you need to cover you for any breakages or errors in cutting your tiles. Any extras can be kept for any future tile breakages or alternatively full boxes can be returned to store for a full refund if returned within 28 days.






WINNERS
 Excellence
 in Retail


*A big thank you
to all our customers!*

Get your goods
DELIVERED
 We offer rapid nationwide delivery.
 Call your local branch
 or visit us instore




JOIN US:


VISIT US:
www.nctilesandbathrooms.com


EMAIL US:
info@nichollsandclarke.com

Distribution Centres Trade Counters & Showrooms

N&C Building Materials
 41-51 Freshwater Road
 Chadwell Heath
Romford, Essex RM8 1SP
 Tel: 020 8586 4600
 Fax: 020 0586 4646

26 Colquhoun Avenue
 Hillington Industrial Estate
 Hillington, Scotland
Glasgow G52 4BN
 Tel: 0141 880 1200
 Fax: 0141 880 1212

Units 3 & 4 Cardiff Trade Park
 Hadfield Road
Cardiff CF11 8AQ
 Tel: 029 2039 0146
 Fax: 029 2022 4356

Unit C1 Cothill Industrial Estate
 Plympton, **Plymouth** PL7 1SR
 Tel: 01752 339724
 Fax: 01752 342746

Unit 4 Waterloo Industrial Estate
 Flanders Road, Hedge End
Southampton SO30 2QT
 Tel: 01489 779700
 Fax: 01489 779701

Nicholls & Clarke
 Est 1875



N&C Building Products Ltd.
 Registration Number: 140
 Registered in England
 Code Y51300

Showrooms & Trade Counters

Units 1A/B Alexander Place
 Lower Park Road
New Southgate, London N111QD
 Tel: 020 8361 6050
 Fax: 020 8361 4757

Unit 8 Ascent Park, Edinburgh Way
Harlow, Essex CM20 2HW
 Tel: 01279 621980
 Fax: 01279 621981

Unit 9 - 11 McDonald Business Park
 Maylands Avenue
Hemel Hempstead
 Hertfordshire HP2 7EB
 Tel: 01442 234635
 Fax: 01442 279501

Leofric House
 (Off Phoenix Way)
 Waterman Road
Coventry CV6 5TP
 Tel: 02476 705300
 Fax: 02476 705301

Unit 14 Meridian Trading Estate
 Bugsby Way
Charlton, London. SE7 7SJ
 Tel: 020 8269 5960
 Fax: 020 8269 5961

Unit1 Cliffside Trade Park
 Motherwell Way
Lakeside, West Thurrock
 Essex RM20 3XD
 Tel: 01708 680180
 Fax: 01708 680181

Unit 8D Pompey Centre
 Fratton Way, Southsea
Portsmouth PO4 8TA
 Tel: 02392 894599
 Fax: 02392 894598

Unit E5 Copley Hill Trading Estate
 Whitehall Road
Leeds LS12 1HE
 Tel: 0113 243 5644

Units 10, 11, 14 & 15
 Advent Business Park
 Advent Way, **Edmonton** N18 3AF
 Tel: 020 8807 3227
 Fax: 020 8807 3223

2 - 3 Altbarn Close
 Wyncolls Road, Severalls Park
Colchester, Essex CO4 9HY
 Tel: 01206 849300
 Fax: 01206 845878

25 Gunnels Wood Park
 Gunnels Wood Road
Stevenage, Hertfordshire SG1 2BH
 Tel: 01438 315400
 Fax: 01438 740338

Unit 8A, St. Davids Road
 (Entrance via Valley Way)
 Swansea Enterprise Pk
Swansea, SA6 8QL
 Tel: 01792 797337
 Fax: 01792 774019

All Prices include VAT. Customers are invited to request a full copy of our terms and conditions of trade or visit our website www.nichollsandclarke.com where it can be viewed before they purchase goods from The N&C Group of Companies. Every effort has been made to ensure the accuracy of the information given in this booklet. The Nicholls and Clarke Group of Companies reserve the right to change specifications and availability without prior notice. The colours shown within this booklet are as the limitations of the printing process will allow. Please refer to actual product samples before purchasing. Delivery is based on fixed delivery schedule. Delivery charges are non-refundable unless returning damaged or faulty products.